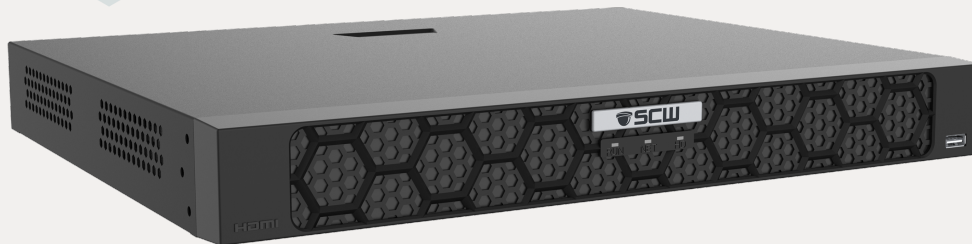


“The Admiral” 8ch AI NVR v4 - ADM8P8-V4M

NDA compliant 8 channel AI NVR with 8 built in PoE ports



- NDA Compliant
- Full 4K recording
- 320Mbps Incoming Bitrate
- 8 Built in Plug and Play PoE ports
- HDMI & VGA Independent Output
- TraceSearch or Smart Mode
- Up to 8 Ultra Motion - 4 Smart Intrusion
- Extended transmission PoE Ports
- Plugin-free web support
- RAID1 Support
- 3 Year Warranty
- 5 Year Warranty Option



Updated 1/2026

For More Information Contact SCW

Sales: 828-483-4237 • Support 828-352-2242

Email: hello@getscw.com

www.getscw.com

Main Specs	
Video Input	Up to 8 IP Cameras
Total Bitrate	320Mbps Incoming (160Mbps Smart Mode On) 160Mbps Outgoing
Recording Resolution	Up to 16MP
Video Compression	H.264/H.265
Audio	Up to 8 through IP cameras
Video Outputs	1 HDMI @ 4K - 1 VGA @ 1080p (independent)
Hard Drive	
SATA	2 SATA Interface
Disk size	Up to 24TB each disk <small>Larger capacity disks must be below 104°F environmental temperature.</small>
Video Capacity <small>(Assumes standard bitrates, results may vary depending on video content)</small>	8 Cameras with 48TB Installed (2x24TB) ~75 days with 4K 30FPS constant ~150 days with 4MP 30FPS constant
External Interface	
Network	1 1000/100/10Mbps ethernet uplink
Built in PoE	8 Built in PoE with extended transmission
PoE Supply	802.3af/at - 30W maximum per port, total 130W
USB Interface	1 x USB 2.0 and 1 x USB 3.0
Alarm In / Out	8 in / 2 out
General	
Smart Features by NVR	8 UMD/4 Smart Intrusion or TraceSearch mode
Smart Mode Limitations	SIP Mode - Up to 4ch (4ch 2MP, 2ch 4MP, 1ch 4K) UMD - Up to 8ch (8ch 2MP, 4ch 4MP, 2ch 4K)
Power Supply	100 ~ 240 VAC
Temperature/Humidity	14F - 131F @ 10%-90% Humidity
Chassis	15-inch - rack mountable with optional ears
Dimensions & Weight	15.0" × 12.7" × 2.1" - 6.0lb (No HDD)